

PrimeLife

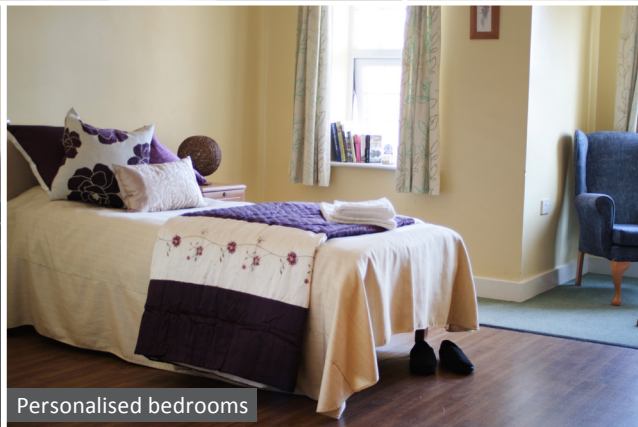
Enjoy life at Barons Park, Leicestershire



Disabled bathing facilities



Multi-faith service



Personalised bedrooms



Main Entrance & Reception

A warm welcome awaits you at Barons Park

Barons Park is a 46 bed nursing home, specialising in caring for people with the most dependent, complex, challenging and advanced forms of dementia. Catering for both elderly people and younger adults (aged 40-64). And just a short walk from the village centre and Kirby Muxloe Castle.



Spacious bedrooms



Innovative use of technology



Key features

Specialist dementia nursing service, offering a specialist dementia care service to clients with complex needs.

- All single room accommodation
- Disabled bathing facilities
- Hairdressing Salon
- Countyside views
- Close to local shops and amenities
- Transport programme
- Secure landscaped gardens
- Digital TV aerial points in every room
- Annual refurbishment programme

Our team

Barons Park employs approximately 70 staff all of whom are trained in the key aspects of care delivery, to ensure the provision of a safe, quality service to our client group.

Our staff also benefit from a vocational training programme, and are regularly supported by our Quality Matters Team to embark upon specialist dementia training, with an emphasis on internal promotion and staff development.

Full details of the training undertaken by our staff can be obtained from the Home Manager.

Location

Barons Park is accessible to the A46 and M1.

Accommodation and services

Barons Park provides 46 clients in spacious single rooms, some of which benefit from en-suite bathrooms for those whose needs are associated with old age and for those who require nursing care and/or a specialist dementia care service. We can also accommodate younger clients with dementia in our younger people's facility, The Lakes, offering permanent or short-term respite stays in addition to a highly specialised palliative care service.

Prospective clients

Prior to any admission to the home our staff team will carry out an individual care plan assessment, which will focus on client's specific choices and needs. These care plans will be structured to the clients preferences and will focus on maintaining and developing as much independence as possible.

Whilst accepting that the majority of our clients will be suffering from dementia, we offer a sensitive support service to allow clients to embark upon a variety of daily living tasks, all will be offered the opportunity to personalise their rooms and to maintain as much choice and independence as they either choose or are able to accommodate.

Activities

We are proud to offer a thriving activity programme, which focuses on regular reminiscence sessions and a variety of either individual or group activities with regular trips out into the local community.

Whilst we very much regard it as our primary responsibility to provide a safe and secure environment, we will encourage, in a sensitive manner, all clients to participate in all that we offer, welcoming you to enjoy life at PrimeLife, Barons Park.