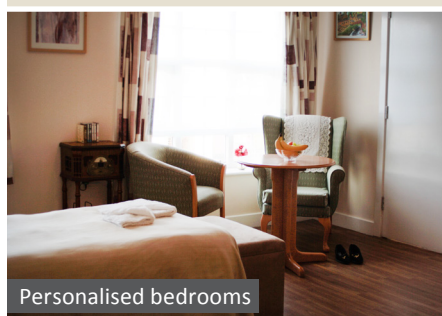


## Enjoy life at Holmes Court, Wigston, Leicestershire



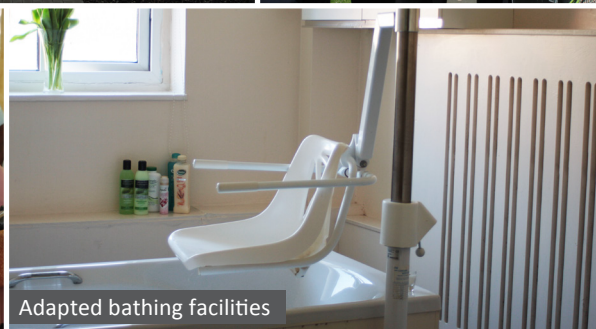
Personalised bedrooms



Enjoy regular trips into town



Enjoy meals with new friends



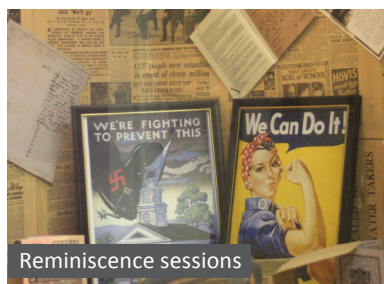
Adapted bathing facilities



The purpose built site

# A warm welcome awaits you at Holmes Court

Holmes Court is a 29 bed purpose built facility, providing all single, en-suite accommodation, for clients whose needs are associated with dementia, a sensory impairment and/or a physical disability.



Reminiscence sessions



Secure gardens



Potting shed

## Key features

Purpose built in 2009, offering spacious accommodation in a quiet residential area of South Wigston.

- All single room accommodation
- Full en-suite bathrooms
- Digital TV aerial points in every room
- Lounges with hearing loops
- Wireless nurse call system
- Adapted bathing facilities
- Clients potting shed and wood carvings
- Secure landscaped gardens
- Annual refurbishment programme

## Our team

Holmes Court employs approximately 25 staff all of whom are trained in the key aspects of care delivery, to ensure the provision of a safe, quality service to our client group.

Our staff also benefit from a vocational training programme, and are regularly supported by our Quality Matters Team to embark upon specialist dementia training, with an emphasis on internal promotion and staff development.

Full details of the training undertaken by our staff can be obtained from the Home Manager.

## Location

Holmes Court is located in South Wigston, offering good access to all local facilities and amenities.

## Accommodation and services

Holmes Court provides for 29 clients, in a purpose built facility for clients whose needs are associated with old age and dementia, we can also accommodate clients with a physical disability, offering permanent or short-term respite stays.

## Prospective clients

Prospective clients are encouraged to view all available vacant accommodation and to visit for a day to fully experience the home. In advance of a place being offered our team will carry out an individual care plan assessment, which will focus on clients specific choices and needs, accepting a varying degree of ability, these care packages will be structured to the clients preferences and will focus on maintaining and developing as much independence as possible.

Whilst accepting that the majority of our clients will be suffering from dementia, we offer a sensitive support service to allow clients to embark upon a variety of daily living tasks, clients will be offered the opportunity to personalise their rooms and to maintain as much choice and independence as they either choose or are able to accommodate. Our clients will also be encouraged to take advantage of the flexible dining arrangements that we offer, the disabled bathing facilities and safe and secure landscaped gardens.

## Activities

We are also proud to offer a daily activity programme, which focuses on regular reminiscence sessions and a variety of either individual or group activities with regular trips out into the local community on our wheelchair adapted Mercedes mini-buses.

Whilst we very much regard it as our primary responsibility to provide a safe and secure environment, we will encourage, in a sensitive manner, all clients to participate in all that we offer, welcoming you to enjoy life at PrimeLife, Holmes Court.